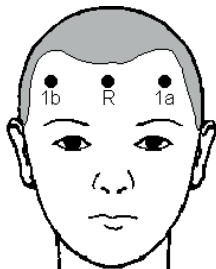


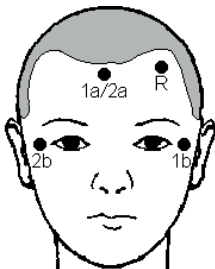
Narco**trend**[®]

Version for the OR

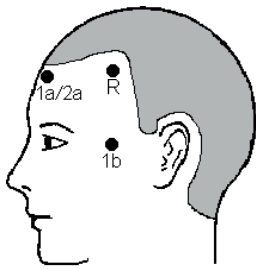
Applying the electrodes



1-channel recording



2-channel recording



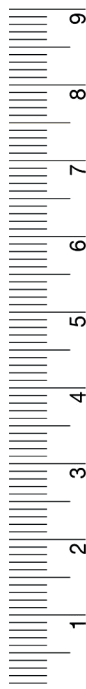
The R-electrode (reference electrode) can be placed anywhere on the forehead.

1. Wipe the skin at the electrode positions with alcohol/an alcohol pad.
2. Apply a drop of preparation paste (0.5 – 1 ml) to a gauze swab and treat the skin at the electrode positions carefully and thoroughly.
3. Rub the skin dry with a dry gauze swab.
4. Pull off the protective material from the electrode and then stick the electrode on the skin.
5. Connect the pushbutton adapters of the patient lead to the electrodes.
6. **Seal the pouch with unused electrodes as airtight as possible.**

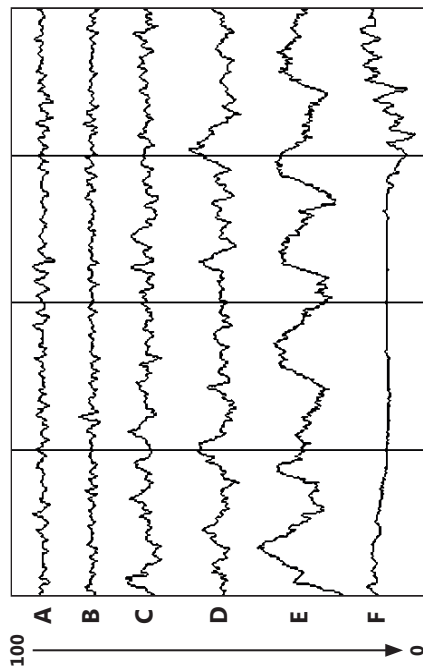
- **Spacing: at least 8 cm / 3 inch between**
- **1a and 1b (1-channel recording)**
- **1a/2a and 1b, 1a/2a and 2b (2-channel recording)**
- **Electrode impedances: < 2 k Ω (max. 8 k Ω)**

Ensure uniform impedance values to the extent possible.

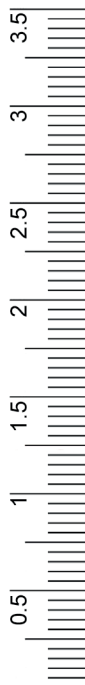
For more information email: info@nonin.com



EEG index, EEG stages, and typical EEG patterns



EEG stage and index always refer to channel 1



Stage	Index
A	95 - 100
B₀	90 - 94
B₁	85 - 89
B₂	80 - 84
C₀	75 - 79
C₁	70 - 74
C₂	65 - 69
D₀	57 - 64
D₁	47 - 56
D₂	37 - 46
E₀	27 - 36
E₁	20 - 26
E₂	13 - 19
F₀	5 - 12
F₁	0 - 4