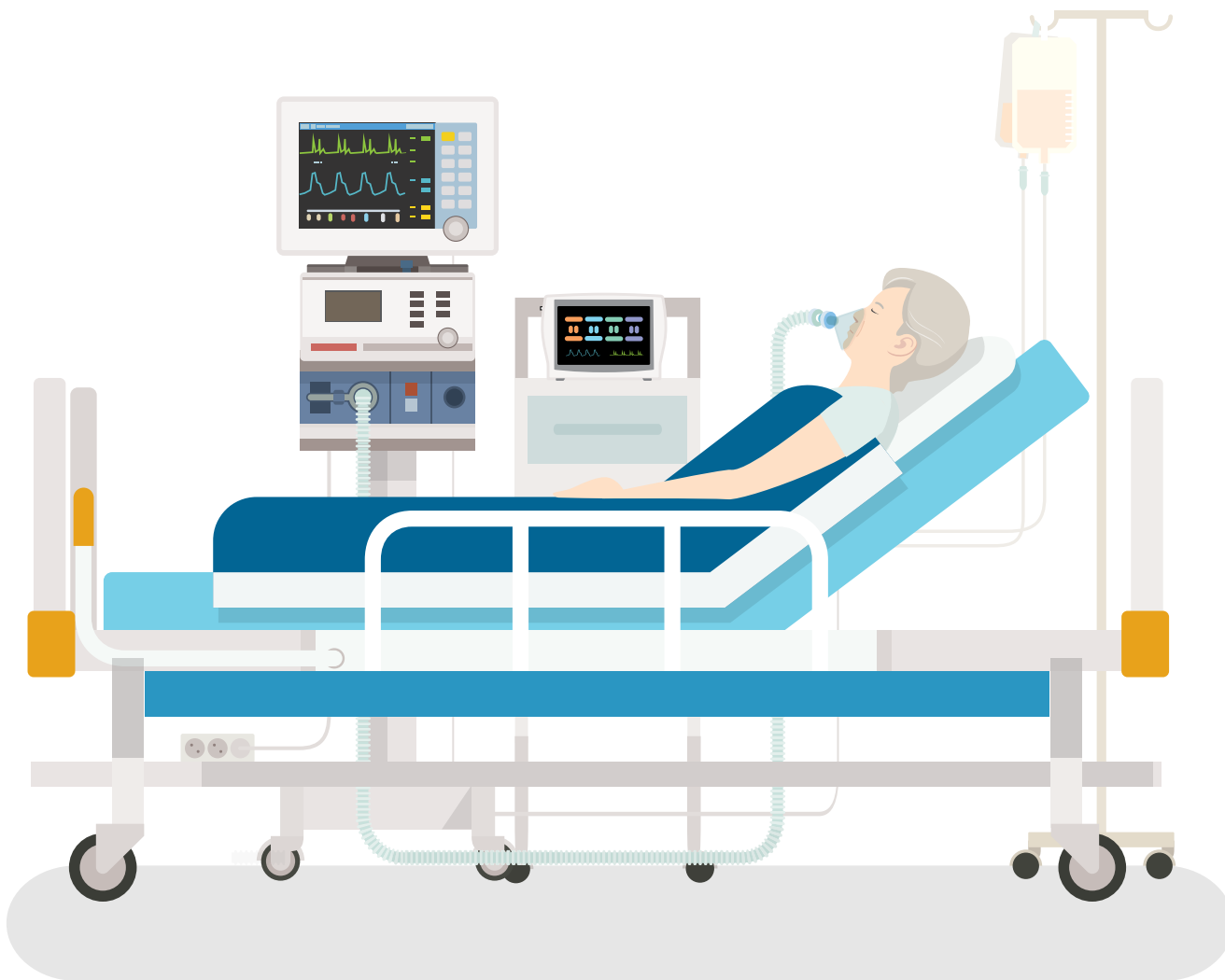


CAPNOGRAPHY AND PULSE OXIMETRY DURING VENTILATION

When a sick patient requires the use of a ventilator to provide enough oxygen to the brain and body, monitoring patient vital signs — especially end-tidal CO₂ (EtCO₂) and pulse oximetry (SpO₂) — becomes even more important. Today, most ventilators are capable of measuring EtCO₂ but in cases where monitors do not include those patient monitoring parameters, a stand-alone device can be used.

Click on the  to learn more.



RELATED RESOURCES

Click on the links below to access additional resources about Nonin capnography:

- 1 View Nonin Capnography Devices
- 2 Watch Calibration Video
- 3 Nonin SpO₂ Sensor Compatibility Guide

For other questions about Nonin capnographs, pulse oximetry, or sensors, visit www.nonin.com, contact Nonin customer services, or refer to your Operator's Manual.

